

# MONTHLY MEMBERSHIP PROGRESS REPORT

LOCATION REP OF SRI LANKA

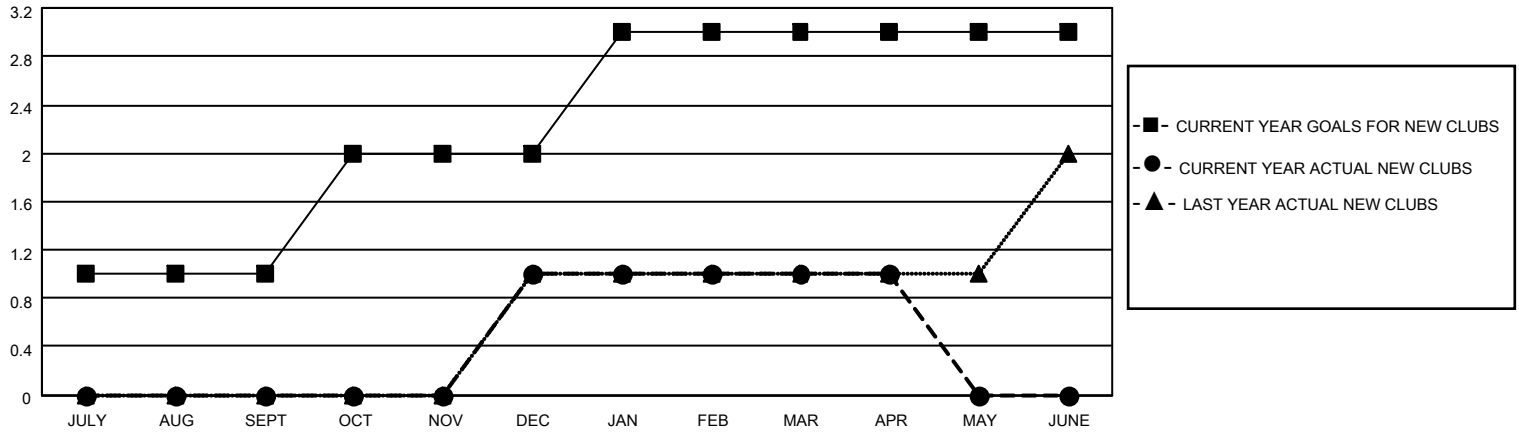
District 306 B1

Results as of: 4/30/2021

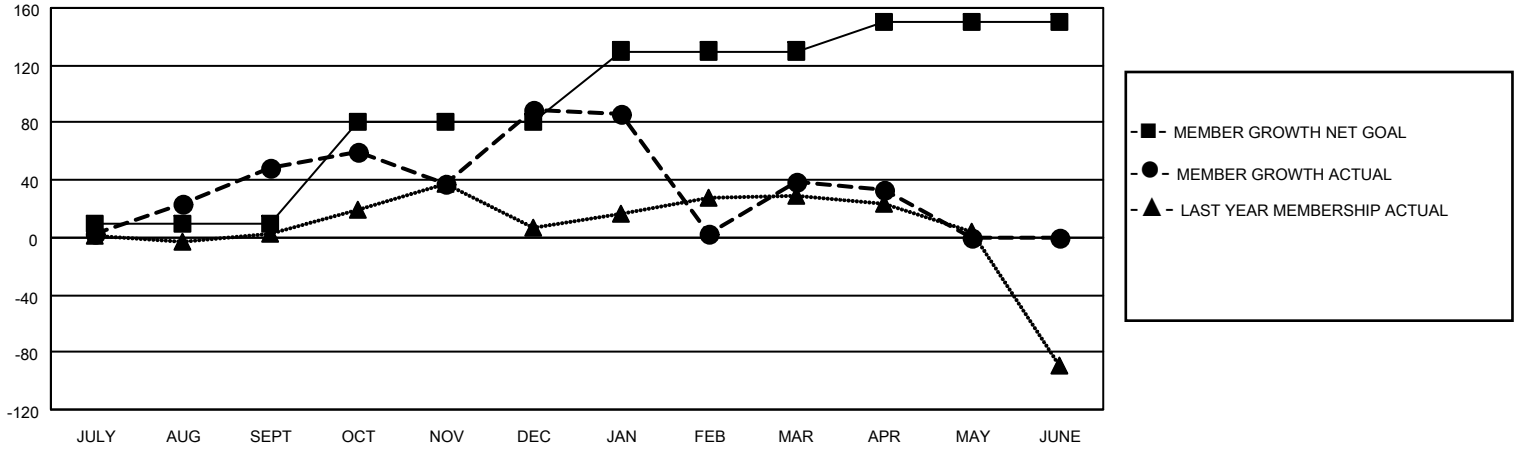
Clubs			
RESULTS FOR 2020-2021			
QUARTER	NEW CLUB GOAL	NEW CLUBS	DROPPED CLUBS
JULY/AUG/SEPT	1	0	0
OCT/NOV/DEC	1	1	0
JAN/FEB/MAR	1	0	6
APR/MAY/JUNE	0	0	0

Members			
RESULTS FOR 2020-2021			
QUARTER	MEMBER GROWTH NET GOAL	MEMBER GROWTH ACTUAL	DROPPED MEMBERS ACTUAL (including transfers)
JULY/AUG/SEPT	10	96	43
OCT/NOV/DEC	70	134	88
JAN/FEB/MAR	50	86	116
APR/MAY/JUNE	20	16	20

**GOALS AND ACTUAL NEW CLUBS CUMULATIVE**



**GOALS AND ACTUAL MEMBERS CUMULATIVE**



**DROPPED CLUBS: 6**

54 CLUBS OF 90 ADDED 1 OR MORE NEW MEMBERS

**GENDER DISTRIBUTION**

MALE 1,942 (77.62%)  
FEMALE 560 (22.38%)

**DROPPED MEMBERS**

[CLICK HERE FOR CUMULATIVE MEMBERSHIP DATA](#)

DECEASED	17
CLUB CANCELLED	92
OTHER	158
<b>TOTAL</b>	<b>267</b>

TOTAL FAMILY UNIT MEMBERS	777
FAMILY MEMBERS PAYING HALF DUES	419